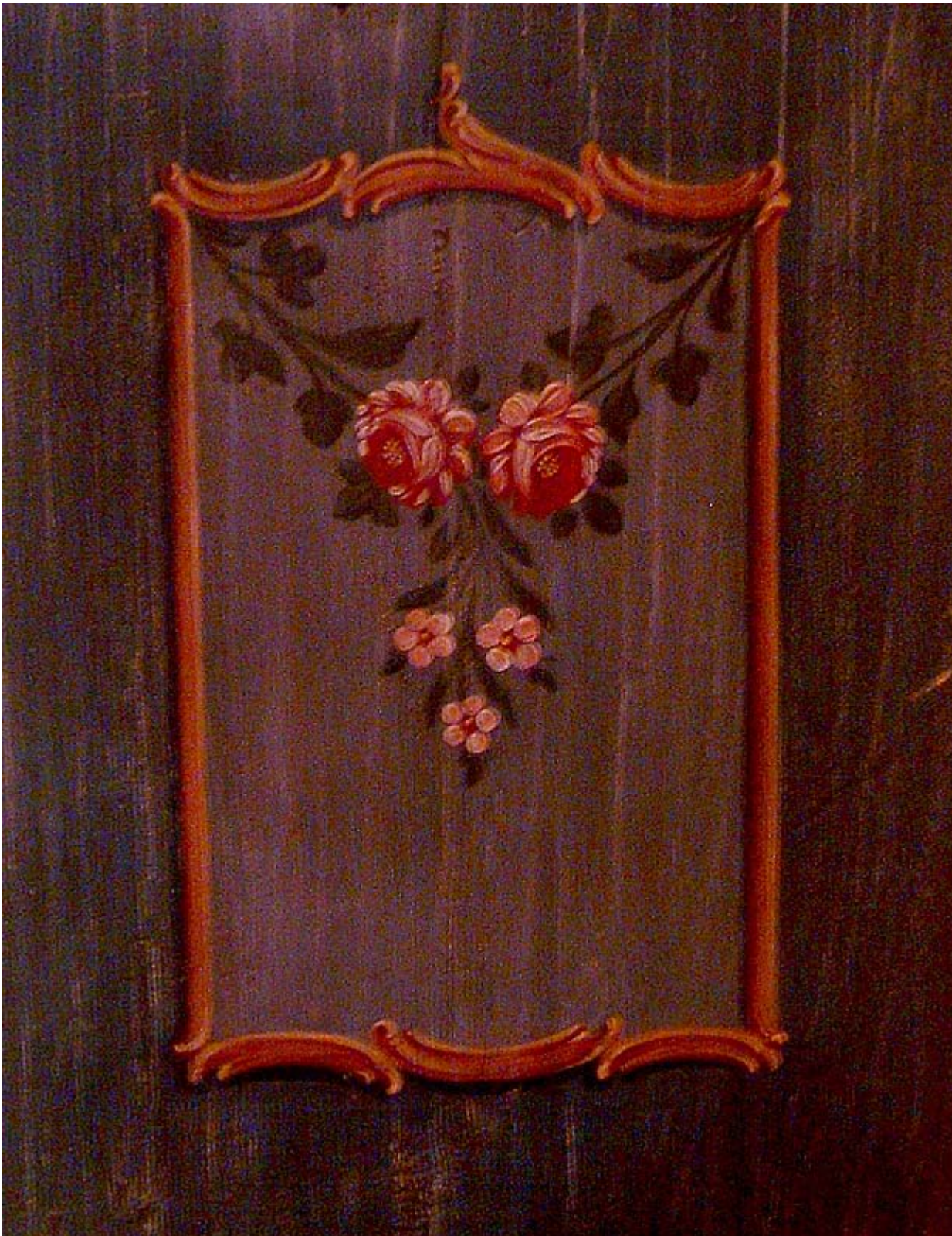


## Rocailen with Baroque Rose

This painting comes from an old cabinet, the base has been antiqued before painting the motive. Flowers and rocaillen will be base coated first, then shaded. Apply rose petal still in the moist basecoat of the flower – leaves are in a dark green. Sm. flowers double-load red with white. Shade the rocaillen with brown, highlight with a lighter ochre. Use darker brown to add shadows.



Pattern - enlarge as needed



*ML Mural Art*  
ML Mural Art

